



Equity-Centered Policy & Storytelling

Defining Equity-Centered Policy ●

Making Policy More Accessible ●

Agenda

Welcome

Introduction to ECP Unit

Panel: OMH Partners

Panel: Kellogg Partners

Premiere: Truth Be Told videos

Q & A



3

Introduction to ECP Unit

Who We Are



Natasha Phelps, J.D.
Director of ECP



Mary Williams-Stover
ECP Policy Manager





3

Introduction to ECP Unit

At The Center, we work to advance health justice by:

Building community capacity,

Supporting the creation and growth of infrastructure, and

* Developing and promoting equity-centered policy. *

We believe investing in communities, providing high quality service, and developing genuine and trusted connections are key components of advancing health equity.





3

Introduction to ECP Unit

* Developing and promoting equity-centered policy. *

**The mission of the Equity-Centered Policies unit is to build on
The Center's capacity and ability to identify, develop, and
discuss what it means to center equity in existing and new
policy work.**





3

Introduction to ECP Unit



[Donate Now](#)

[Learning Center](#)

[Podcast](#)

[ABOUT](#)

[ISSUES](#)

[RESOURCES](#)

[MEDIA](#)

[EVENTS](#)

[SHOP](#)

[CONTACT](#)



EQUITY-CENTERED POLICIES

What is Equity-Centered Policy?

Equity is about identifying, reducing, and eventually eliminating social, economic, and environmental conditions that disproportionately face marginalized communities (all of which greatly impact our health and life expectancy). Equity is the vehicle in which we can strive to achieve equality. Equity-centered policy is effective policy.

Equity-centered policies are laws and policies that are created, implemented, and enforced in consideration of quality evidence



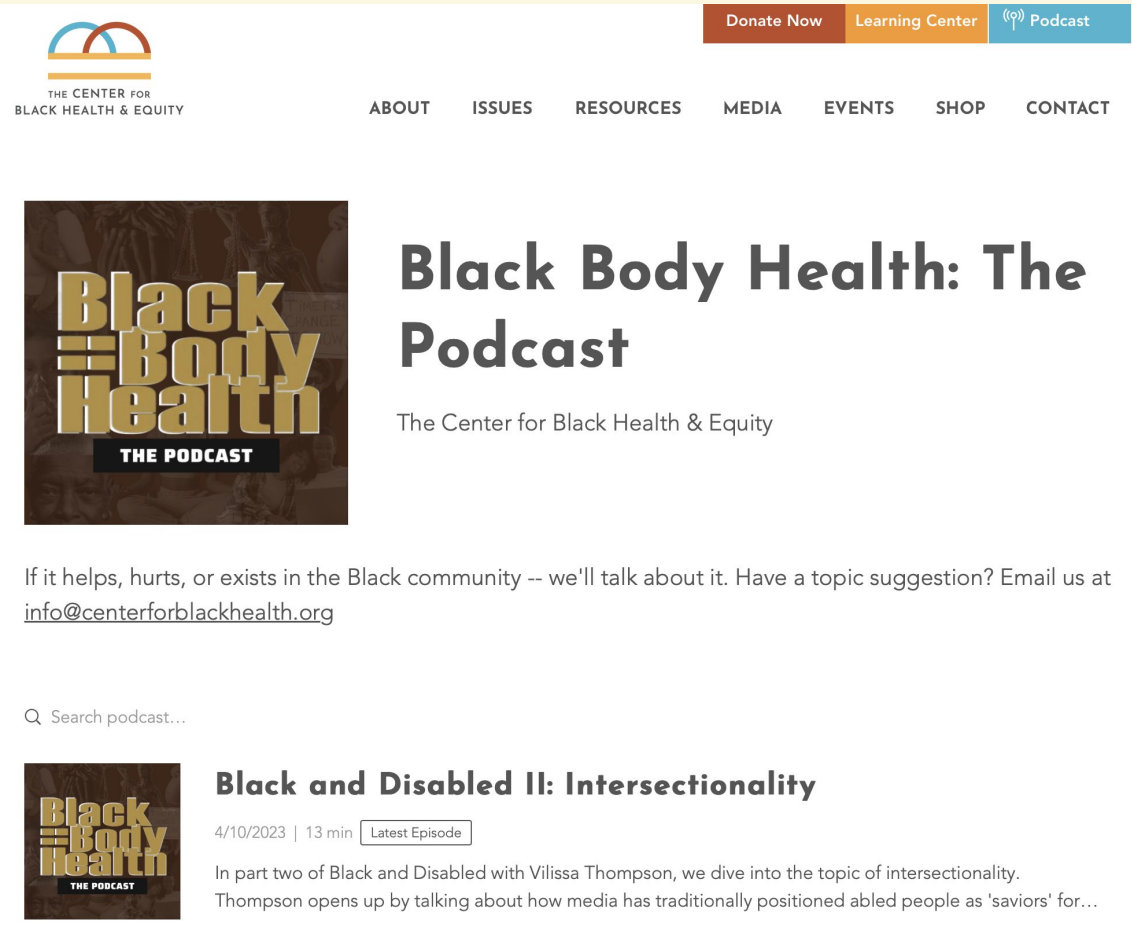
3

Introduction to ECP Unit



2023 State of Black Health POLICY PLATFORM

The Center for Black Health & Equity

The Center for Black Health & Equity

ABOUT ISSUES RESOURCES MEDIA EVENTS SHOP CONTACT

Donate Now Learning Center Podcast

Black Body Health: The Podcast

The Center for Black Health & Equity

If it helps, hurts, or exists in the Black community -- we'll talk about it. Have a topic suggestion? Email us at info@centerforblackhealth.org

Q Search podcast...

Black and Disabled II: Intersectionality

4/10/2023 | 13 min Latest Episode

In part two of Black and Disabled with Vilissa Thompson, we dive into the topic of intersectionality. Thompson opens up by talking about how media has traditionally positioned abled people as 'saviors' for...



3

Introduction to ECP Unit

**Office of Minority Health – “Framework to Address Health Disparities through Collaborative Policy Efforts”
(Centering Policies in Equity)**

W.K. Kellogg – “Building Capacity by Centering Policies in Equity (Through Storytelling)”





OMH Grant

Legal Epidemiology & Analysis



CPIE Collaborative – Community Experience



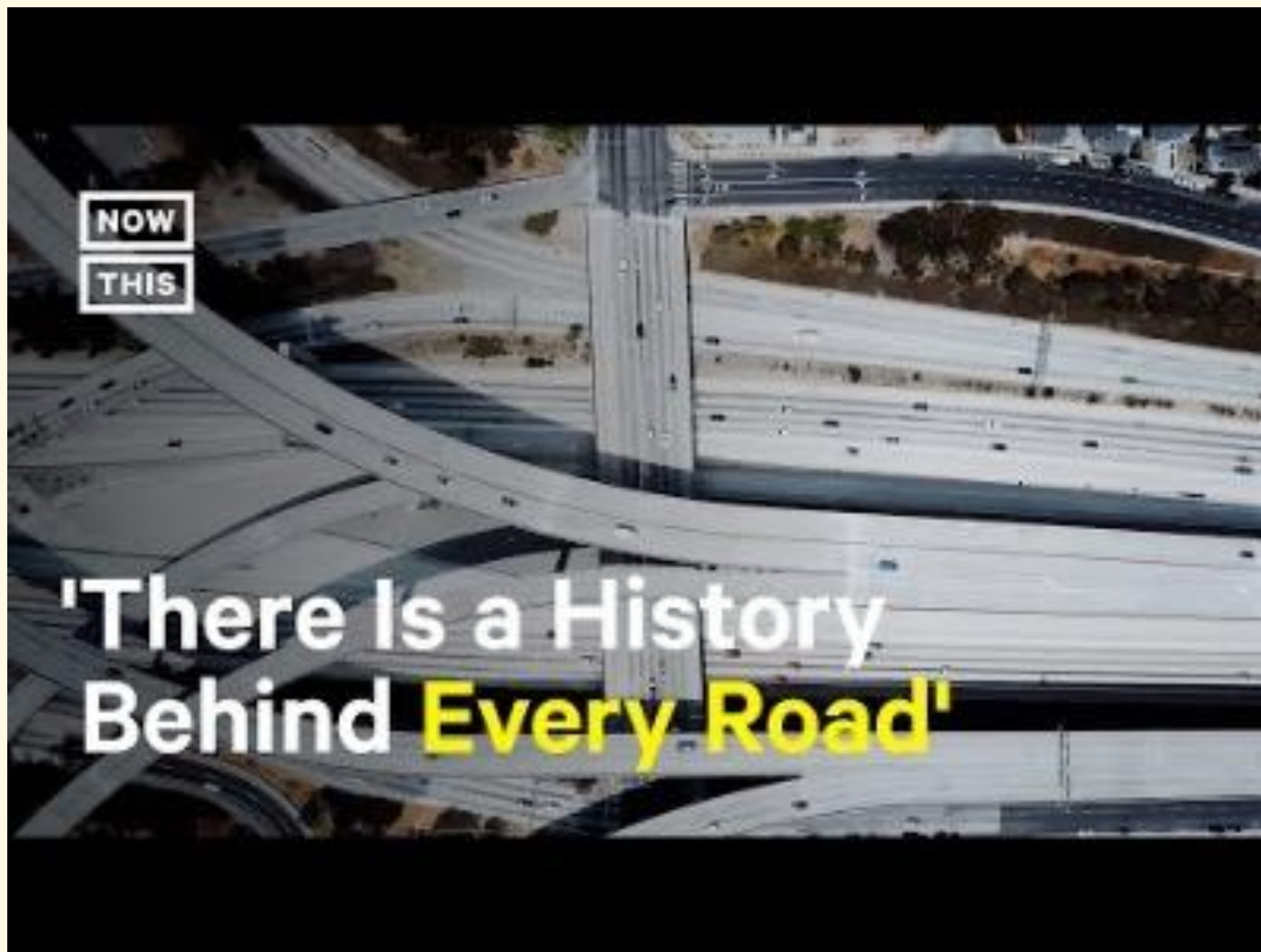


Systemic Driver of Poor Health





Systemic Driver of Poor Health





Legal Epi - Research Question

Q: What are the health impacts of the environmental conditions modified by historical [transportation policy] and development on [neighborhood] residents?

□ How did the [construction of the I-75/I-85 Connector] impact the lives of residents in the [Sweet Auburn Avenue Community of ATL]?



Legal Epi - Hypothesis

Transportation policy decision

Environmental changes

Health impacts

Health disparities





Legal Epi - Research Process

Goal

Measure environmental change after the creation of highways/freeways through policy; identify potential equity and health outcomes

- **Suggests designation of “health inequity zones”**

Historical/Current

- **Federal transportation policy**
- **State transportation policy**
- **Local transportation policy**
- **State tobacco policy**
- **Local tobacco policy**

Five Cities

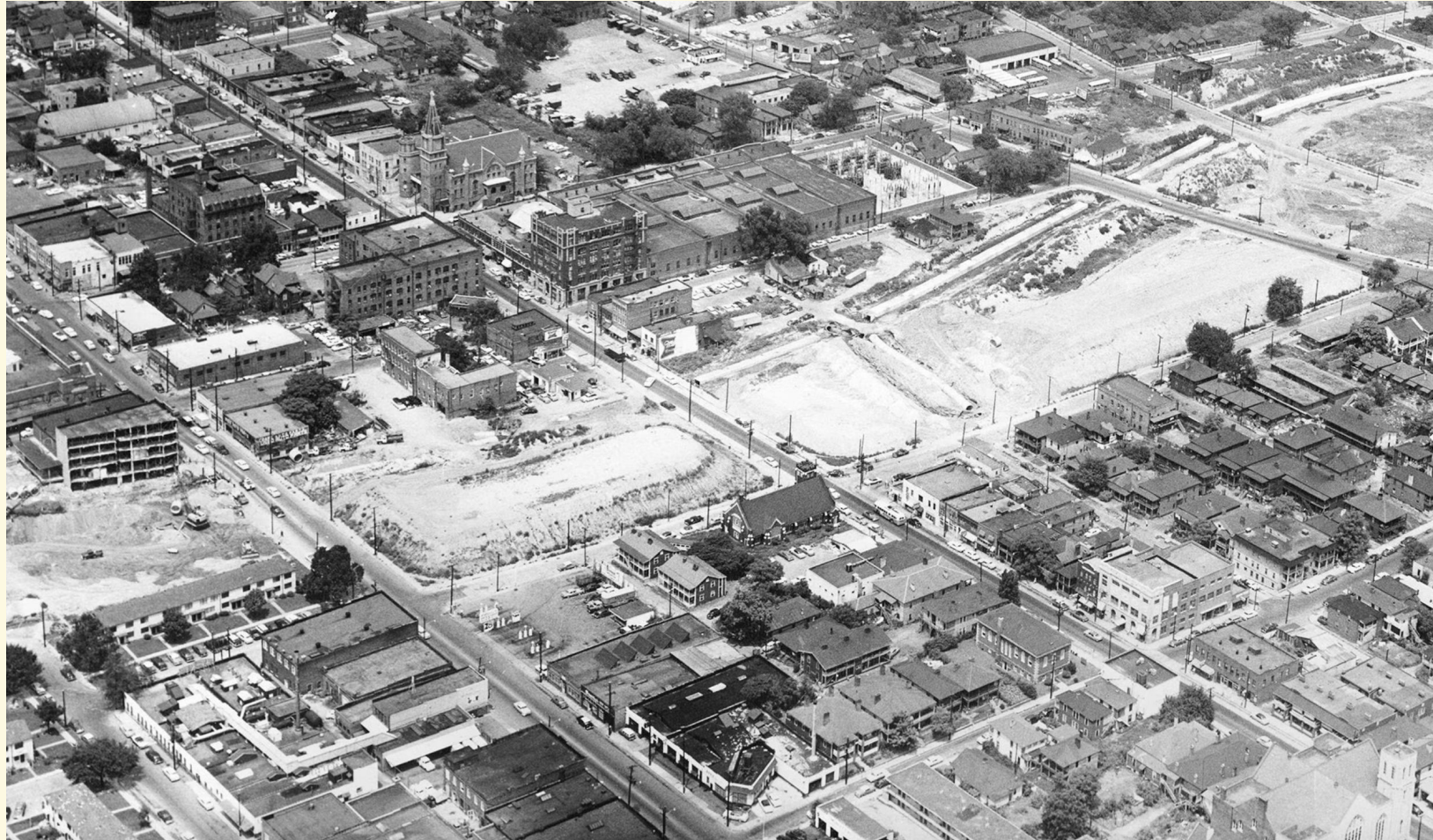
- **Atlanta (Sweet Auburn)**
- **Cleveland (Buckeye-Woodhill)**
- **St. Paul (Rondo)**
- **Oakland (West Oakland)**
- **Houston (Independence Heights)**

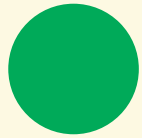
A decorative graphic on a light cream background. It features a green line that starts from the left, curves down, and then continues horizontally. A blue line starts from the bottom, curves up, and then continues horizontally, overlapping the green line. A red line starts from the top right and curves down. An orange circle is positioned on the left side. Two black dots are placed on the green line: one at the first curve and one at the end of the horizontal segment.

Panel Questions



Example: Sweet Auburn, ATL





The Lived Experiences

CPIE Community Collaborative

Ms. Princess Wilson

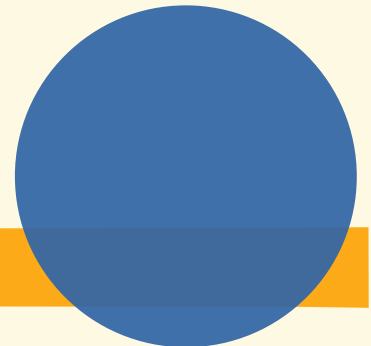
Ms. Bessie Sellaway

Mr. Devon Lee Woodson

Mr. Lee Matthews

Mr. Vincent Vandiegriff

Bishop Bobby Graham, Jr.



Fulton County Senior Services



A decorative graphic on a light yellow background. It features a green line that starts from the left, curves down, and then continues horizontally. A blue line starts from the bottom, curves up, and then continues horizontally, overlapping the green line. A red line starts from the top right and curves down. An orange circle is positioned on the left side. Two black dots are placed on the green line: one at the first curve and one at the end of the horizontal segment.

Panel Questions

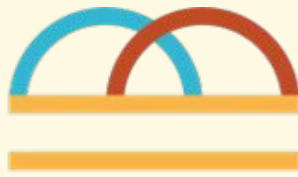


3

Next Steps: Dissemination

Exploring dissemination, sustainability, and evaluation.





THE CENTER FOR
BLACK HEALTH & EQUITY



W.K. Kellogg Foundation Grant

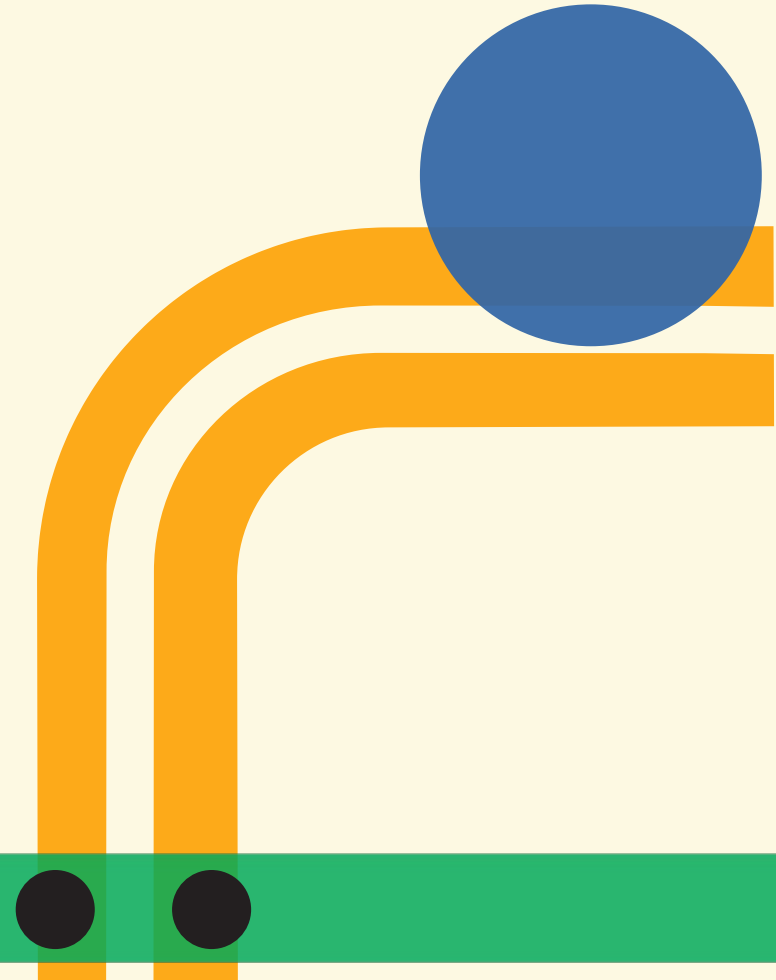
Community Health Needs Assessment **Truth Be Told videos** ●

Truth Be Told Training & Resources ●



Truth Be Told

- **Community Health Needs Assessment**
- **Truth Be Told Videos**
- **5-Part Training – Truth Be Told: Storytelling for Equity-Centered Policy Change**
 - **Storytelling**
 - **Health Equity 101**
 - **Law & Policy 101**
 - *Grantees receive a policy menu*
 - **Storytelling for Equity-Centered Policy Change**
 - **Elevator Pitch Workshop**

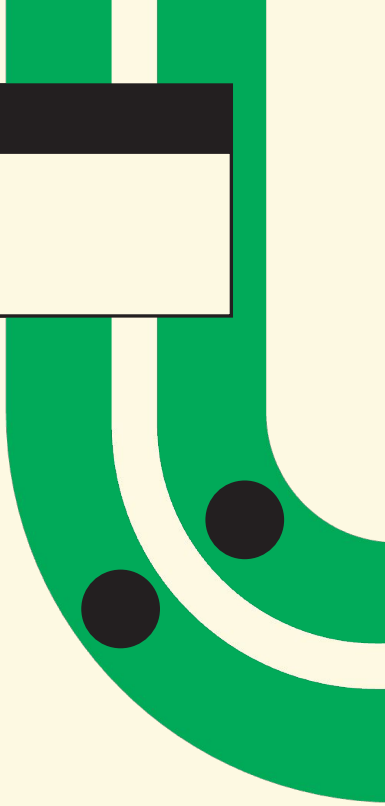


A decorative graphic on a light yellow background. It features a green line that starts from the left, curves down, and then continues horizontally. A blue line starts from the bottom, curves up, and then continues horizontally, overlapping the green line. A red line starts from the top right and curves down. An orange circle is positioned on the left side. Two black dots are placed on the green line: one at the first curve and one at the end of the horizontal segment.

Panel Questions

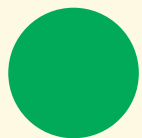


Truth Be Told: NOLA

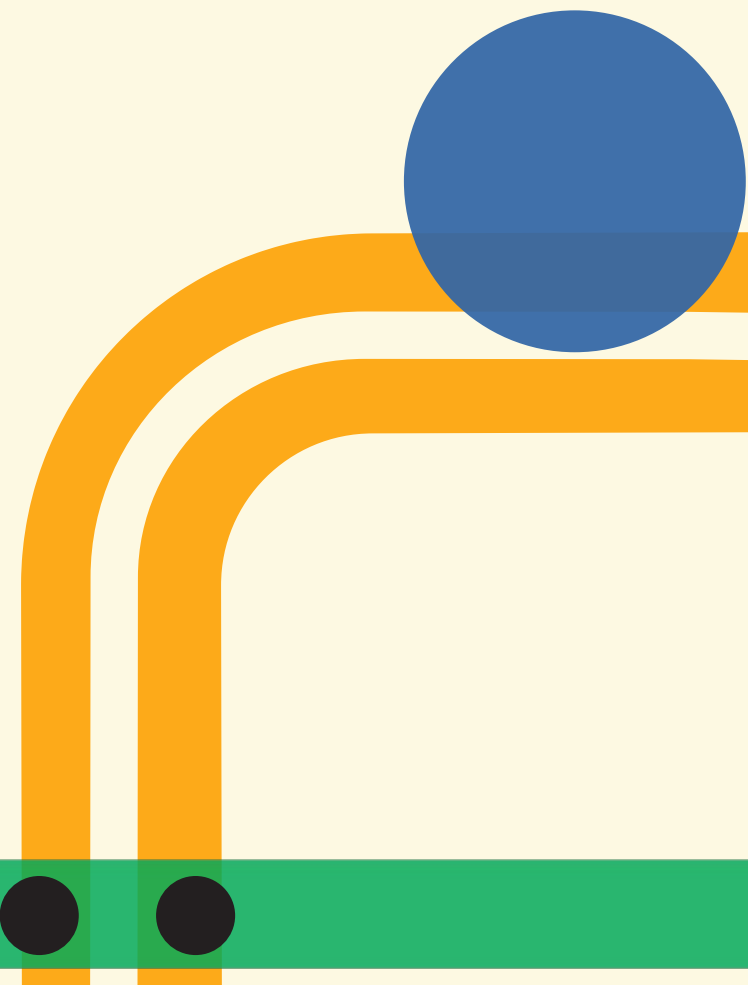


A decorative graphic on a light yellow background. It features a green line that starts from the left, curves down, and then continues horizontally. A blue line starts from the bottom, curves up, and then continues horizontally, overlapping the green line. A red line starts from the top right and curves down. An orange circle is positioned on the left side. Two black dots are placed on the green line: one at the first curve and one at the end of the horizontal segment.

Panel Questions

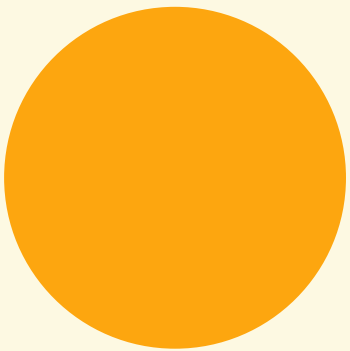


Truth Be Told: Detroit



A decorative graphic on a light cream background. It features a green line that starts from the left, curves down, and then continues horizontally. A blue line starts from the bottom, curves up, and then continues horizontally, overlapping the green line. A red line starts from the top right and curves down. An orange circle is positioned on the left side. Two black dots are placed on the green line: one at the top curve and one at the bottom curve.

Panel Questions



Audience Q&A



Thank you!

nphelps@centerforblackhealth.org

mwilliamsstover@centerforblackhealth.org



THE CENTER FOR
BLACK HEALTH & EQUITY